



Victoria Crescent, SE19 | Guide Price £325,000

020 8702 9333

crystalpalace@pedderproperty.com

pedder
We live local



In General

- Two bedroom apartment
- Cosmetic upgrades required
- Quiet, popular location
- Nearby Gipsy Hill station
- No onward chain
- A share of the freehold

In Detail

Guide Price £325,000 - £350,000 A two bedroom second floor apartment forming an art-deco style purpose built development on a quiet no-through road in Crystal Palace.

The property requires some cosmetic upgrades, although offers an ideal first time or investment purchase within easy reach of the centre of town. Brief highlights include two double bedrooms, a 13ft 8 reception room with a south-westerly aspect, a separate kitchen, and a share of the freehold.

Externally there are very well maintained communal grounds with mature planting.

Victoria Crescent is well placed for access to a multitude of shopping and leisure options at The Triangle, also both Gipsy Hill and Crystal Palace rail links.

No onward chain.

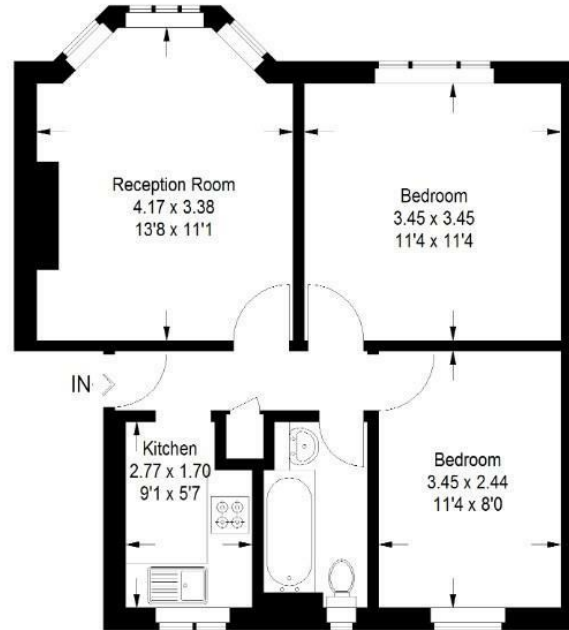
EPC: D | Council Tax Band: B | Lease: 980 Years remaining | SC: £2280pa | GR: £100pa | BI: Incl. in SC



Floorplan

Compton Court, SE19

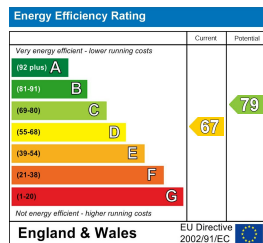
Approximate Gross Internal Area
47.0 sq m / 506 sq ft



Second Floor

Copyright www.pedderproperty.com © 2025

These plans are for representation purposes only as defined by RICS - Code of Measuring Practice. Not drawn to Scale. Windows and door openings are approximate. Please check all dimensions, shapes and compass bearings before making any decisions reliant upon them.



Pedder Property Ltd trading as Pedder for themselves and for the vendor/landlord of this property whose agents they are, give notice that (1) these particulars do not constitute any part of an offer or contract, (2) all statements contained within these particulars are made without responsibility on the part of Pedder or the vendor/landlord, (3) whilst made in good faith, none of the statements contained within these particulars are to be relied upon as a statement of representation or fact, (4) any intending purchaser/tenant must satisfy him/herself by inspection or otherwise as to the correctness of each of the statements contained within these particulars, (5) the vendor/landlord does not make or give either Pedder or any person in their employment any authority to make or give representation or warranty whatsoever in relation to this property.